

OneTDEC Easy Setup Guide 易安裝指引



(1) 系統需求 Hardware & System Requirement

	伺服器	用戶端電腦
處理器	奔騰 IV 或兼容 1.8 GHz 或以上	奔騰 III 或兼容 650 MHz 或以上
記憶體	1GB 或以上	256MB 或以上
硬碟	2 GB 或以上(不包括客戶數據)	500MB 或以上
光碟機	CD-ROM	
作業系統	<ul style="list-style-type: none"> • Windows 2000 Server (SP4 或以上) • Windows XP Professional / Home Edition (SP4 或以上) • Windows 2003 Server Standard / Enterprise Edition (SP2 或以上) • Windows 2000 Professional Edition (SP2 或以上) • Windows Vista • Windows 7 	

	Server	Workstation
Processor	Pentium IV or compatible 1.8 GHz or above	Pentium III or compatible 650 MHz
Memory	1 GB or above	256MB or above
Hard Disk	2 GB or above (not including data)	500MB or above
Optical Drive	CD-ROM	
Operation System	<ul style="list-style-type: none"> • Windows 2000 Server (SP4 or later) • Windows XP Professional / Home Edition (SP4 or later) • Windows 2003 Server Standard / Enterprise Edition (SP2 or later) • Windows 2000 Professional Edition (SP2 or later) • Windows Vista • Windows 7 	

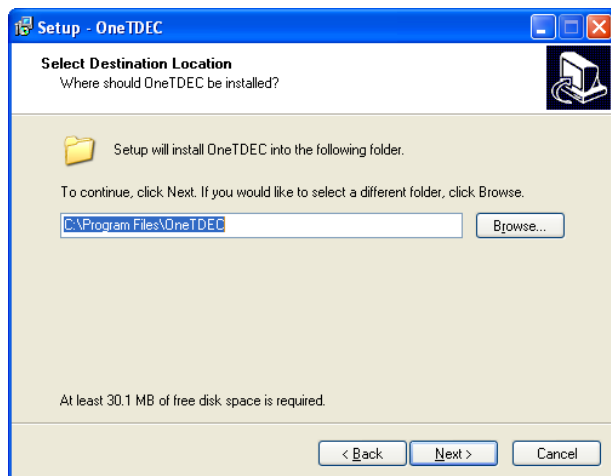
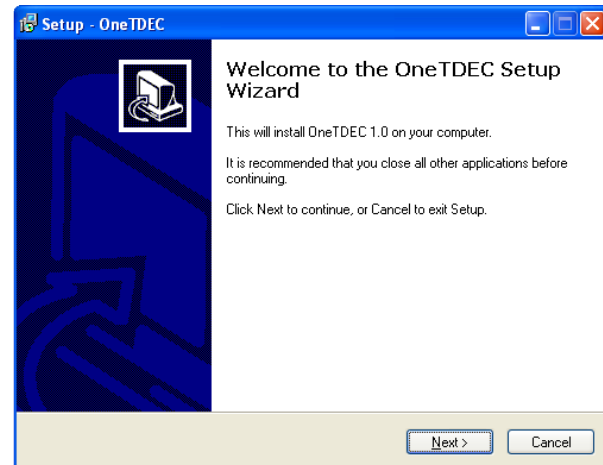
(2) 聯絡資料 Contact Information

客戶服務 Customer Service Hotline	
電話 Tel	(852) 2111 1611
傳真 Fax	(852) 2111 1600
電郵 Email	helpdesk@brio.com.hk
網址 Web	www.brio.com.hk

(3) 安裝指引| Setup Procedures

將 OneTDEC 安裝碟放入光碟機內，安裝程式
便會自動啟動，按 “Next” 開始執行

Insert the "OneTDEC" setup disc in the CD-ROM
drive. Setup program will run automatically.
Click "Next" to start.

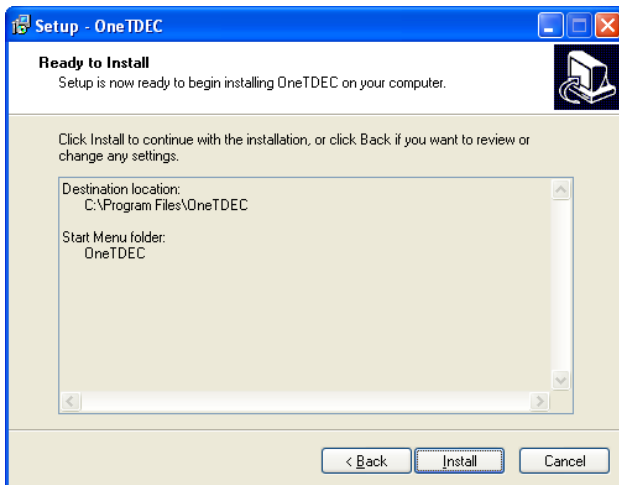
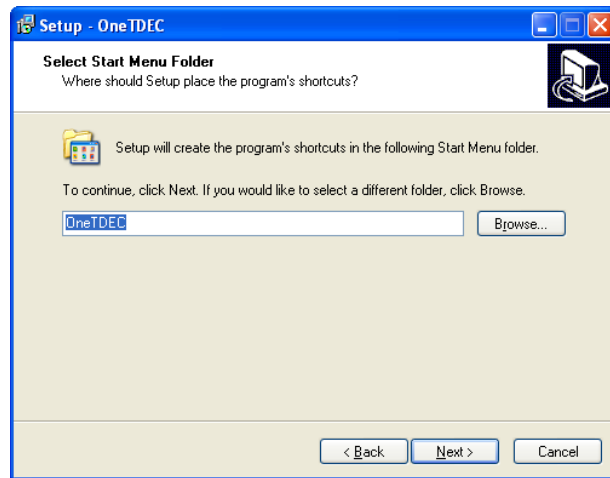


選擇 OneTDEC 安裝位置，然後按 “Next”

Select destination location to install OneTDEC.
Click "Next" to continue.

選擇 OneTDEC 捷徑存放位置，然後按
“Next”

Select folder in the start menu for OneTDEC
shortcut. Click "Next" to continue.

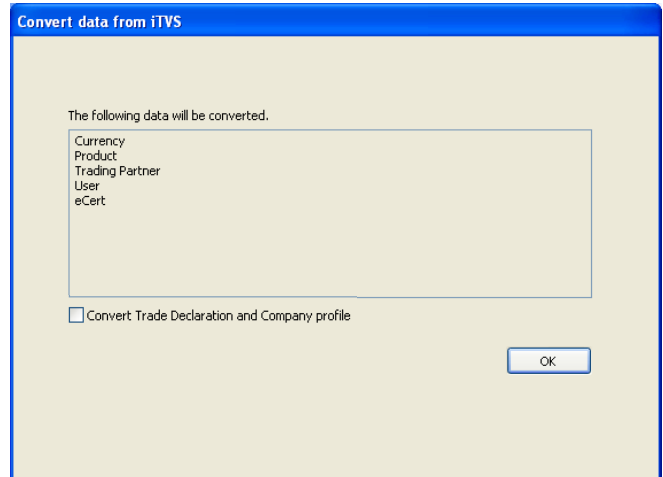


按 “Install” ，開始安裝

Click "Install" to start the installation.

按 “OK” ，將有關數據轉換至 OneTDEC 內

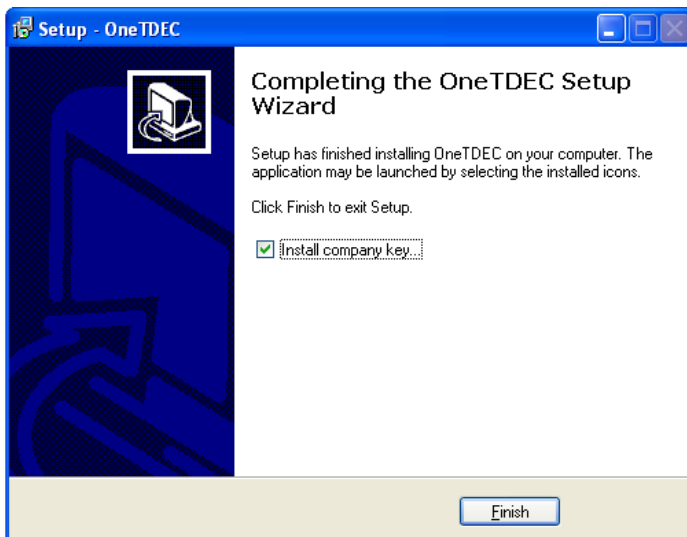
Click "OK" to convert data to OneTDEC.



一般用戶 (General User)	*TTRS/CO/PN 用戶 (*TTRS/CO/PN User)
<ul style="list-style-type: none"> ▪ Currency 	<ul style="list-style-type: none"> ▪ Currency
<ul style="list-style-type: none"> ▪ Product 	<ul style="list-style-type: none"> ▪ Product
<ul style="list-style-type: none"> ▪ Trading Partner 	<ul style="list-style-type: none"> ▪ Trading Partner
<ul style="list-style-type: none"> ▪ User 	<ul style="list-style-type: none"> ▪ User
<ul style="list-style-type: none"> ▪ eCert 	<ul style="list-style-type: none"> ▪ eCert
<ul style="list-style-type: none"> ▪ Trade Declaration & Company Profile 	

#“一般用戶”與“TTRS/CO/PN 用戶”所轉換的數據會有所不同
Data to be converted between # "General User" & "TTRS/CO/PN User" is different.

- *TTRS - 紡織商登記方案
- *CO - 產地來源證
- *PN - 生產通知書

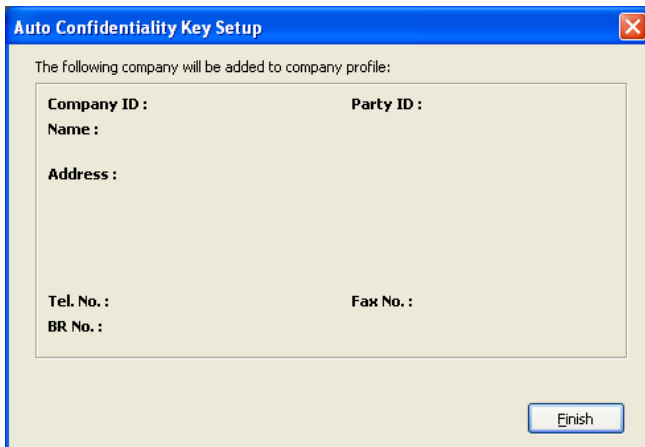


按“Finish”，開始安裝“Company Key” (包裝盒內之橙色光碟 “公司戶口設定檔”)

Click "Finish" to start the "Company Key" installation. (Orange disc "COMPANY ACCOUNT SETUP FILES" in the packing)

將“公司戶口設定檔”光碟放入光碟機內，選擇光碟位置，按“OK”

Insert "COMPANY ACCOUNT SETUP FILES" disc in the CD-ROM drive and select the disc location. Click "OK" to continue.

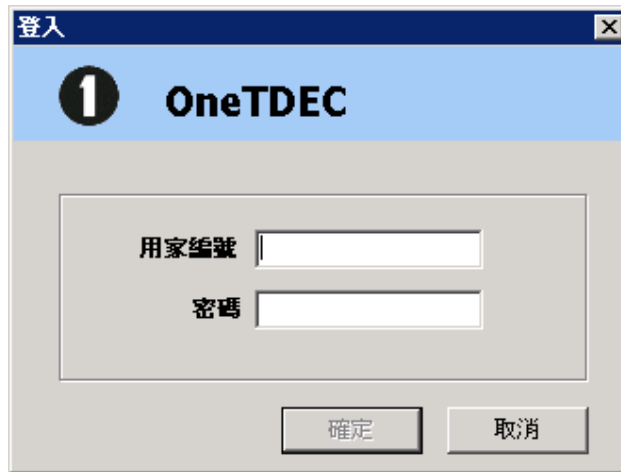


按“Finish”，安裝完成
Click "Finish" and setup is completed.

(4) 登入 Login

雙點擊桌面上的 **1**，然後輸入“用家編號”和“密碼”

Double click **1** in the desktop, enter the "User ID" and "Password" to start OneTDEC.



數據並未轉換至 OneTDEC 內的用戶：

For the user who has not yet converted the data to OneTDEC:

用家編號 (User ID)：SYSTEM

密碼 (Password)：MANAGER

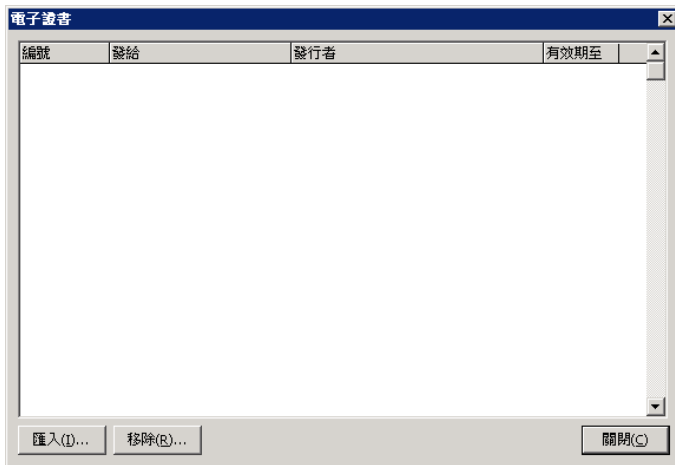
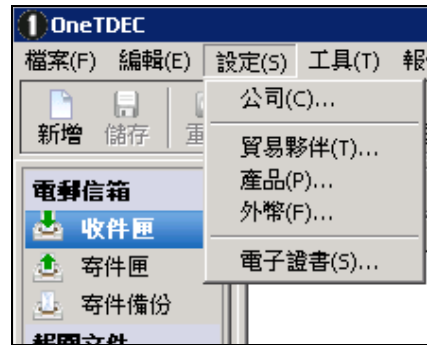
數據已轉換至 OneTDEC 內的用戶，可使用現行的“用家編號”及“密碼”

For the user who converted the data to OneTDEC, please use the current "User ID" and "Password".

(5) 匯入電子證書 New certificate import process

開啟 OneTDEC，按“設定” > “電子證書”

Open OneTDEC, click "Setup" > "Certificates"



按“匯入”，繼續操作
Click "Import" to continue

標興電子商務有限公司 (Brio Electronic Commerce Limited):
香港郵政 Hongkong Post

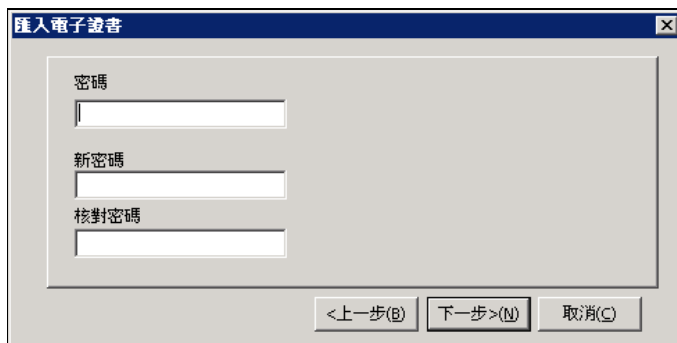
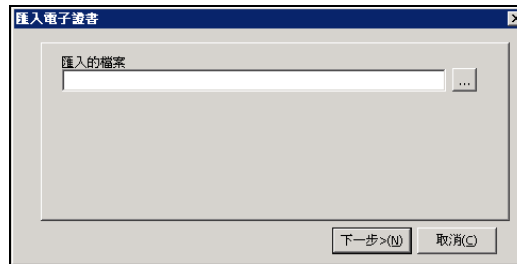
- 香港郵政電子證書(個人) Hongkong Post e-cert (Personal) certificates
- 香港郵政電子證書(機構) Hongkong Post e-cert (Organizational) certificates

電子核證服務有限公司 Digi-Sign

- 個人 D-Cert 類別一 Digi-Sign Personal ID-Cert Class 1 certificates
- 機構 D-Cert 類別二 Digi-Sign Organizational ID-Cert Class 2 certificates

按 “...” 及選擇電子證書 (“p.12” 或 “.pfx” 檔案)，按“下一步”

Click "..." and select the certificate ("p.12" or ".pfx" file), click "Next" to continue.



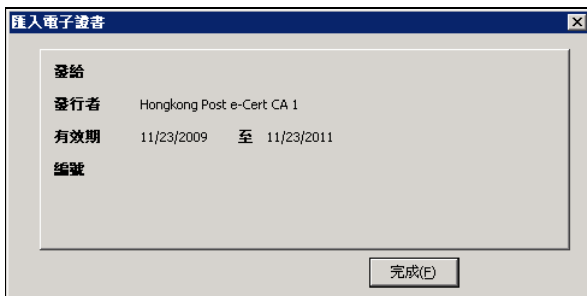
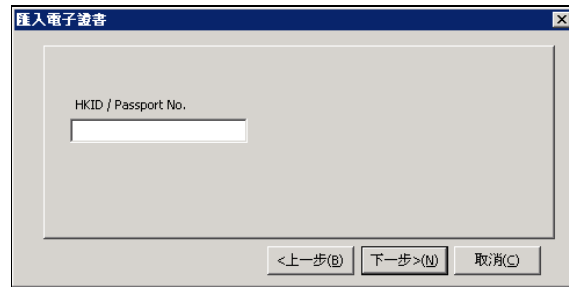
在“密碼”欄內輸入對應的電子證書密碼(*16位數字)，然後於“新密碼”及“核對密碼”欄內輸入對應的訊息密碼(由訊息簽署人自訂)，按“下一步”

Enter certificate password for the selected certificate in "Password" field (*16-digi), enter the Message Signatory Password (set by Message Signatory) in "New Password" and "Retype New Password" field. Click "Next" to continue.

- * 香港郵政電子證書(機構/個人)：電子證書密碼(16位數字)可見於電子證書密碼信封內
- * Hongkong Post e-cert (Organizational / Personal) certificates: e-cert PIN can be found in e-Cert Envelope.
- * Digi-Sign(機構/個人)：密碼(16位數字)可見於密碼封函內
- * Digi-Sign(Organizational / Personal) certificate ID-cert: Password can be found in Customer Kit.

選擇“HKID/Passport No.”，並輸入電子證書持有人的香港身份證/護照號碼 (例子：A123456(7))，按“下一步”

Select "HKID/Passport No." and type the HKID No./Passport No. of the certificate holder (e.g. : A123456(7)). Click "Next" to continue.



按下“Finish”完成證書匯入

Click "Finish" and certificate import is completed.

如用戶需要匯入其他電子證書，可重複以上步驟
Repeat the above procedure if need to import more e-cert.